

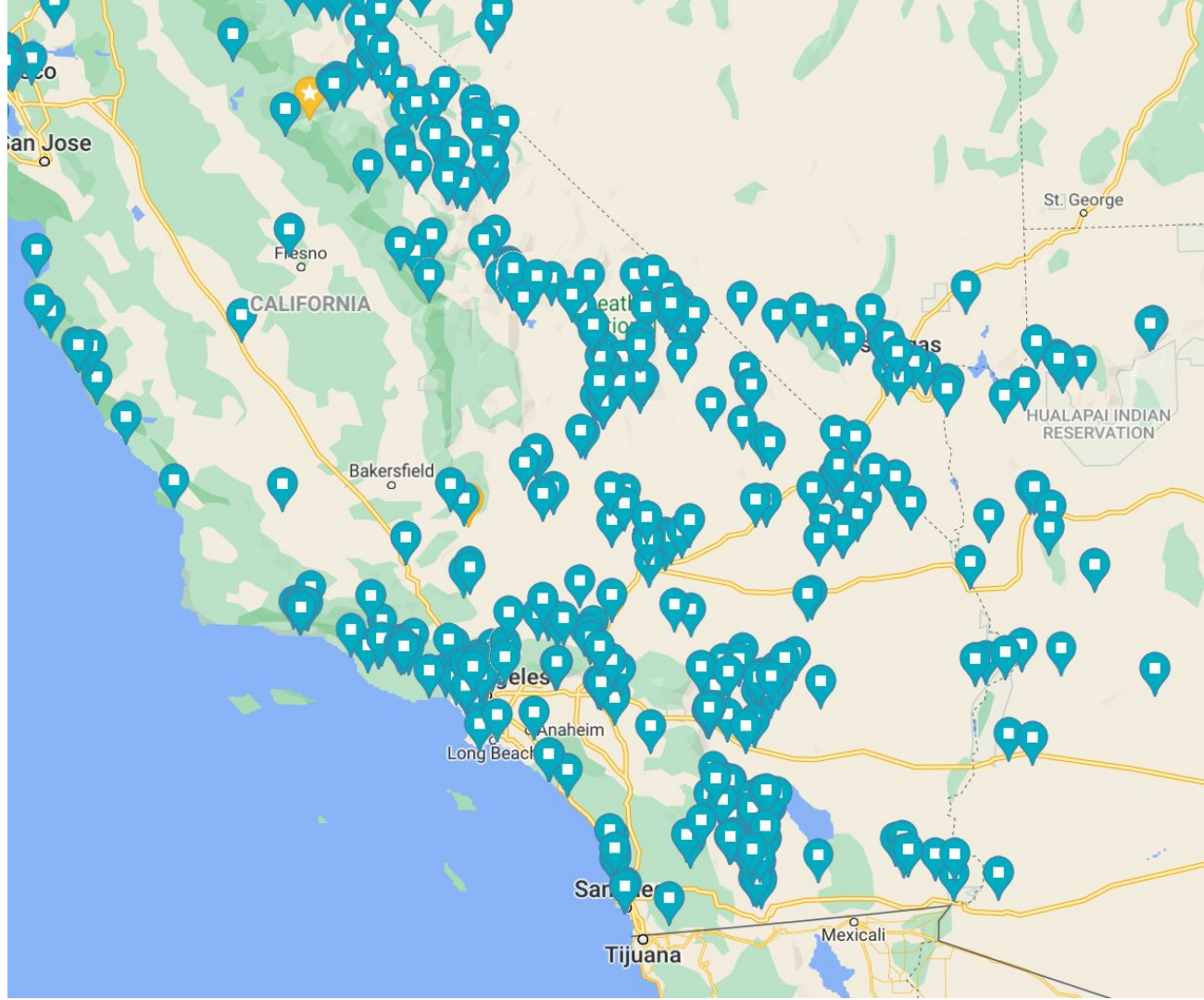
space-time data visualization

research

When representing space-time events on Google Maps you run into user experience issues.

With single markers, it's hard to visualize events that occur over time. You can filter by time, but then you then have to compare views.

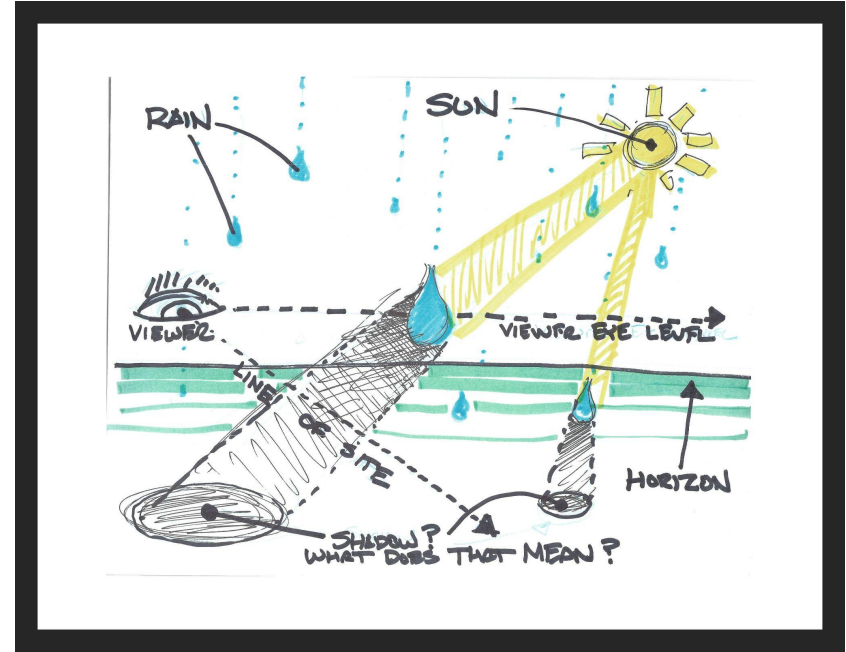
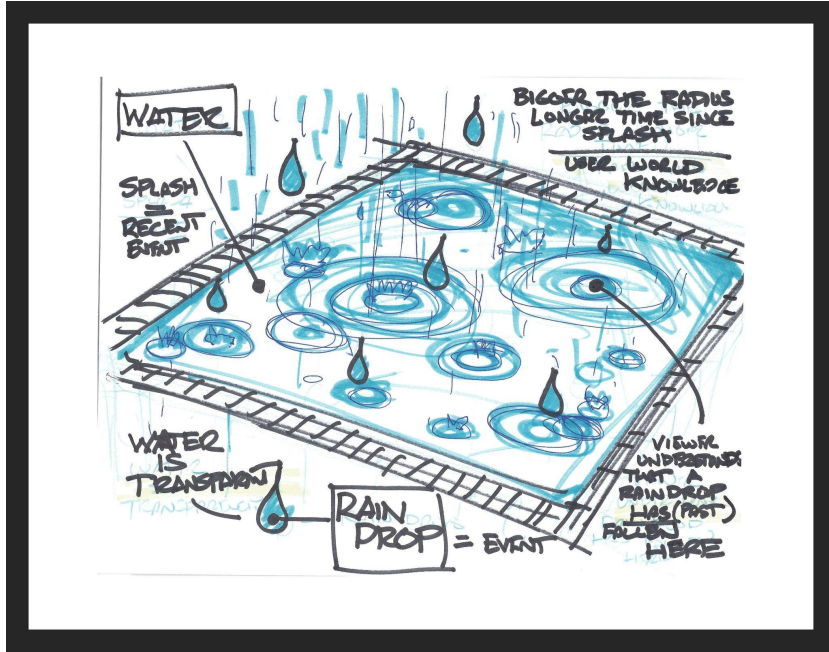
If you don't want to use a filter, events that occur at the same address obscure older events.



research questions:

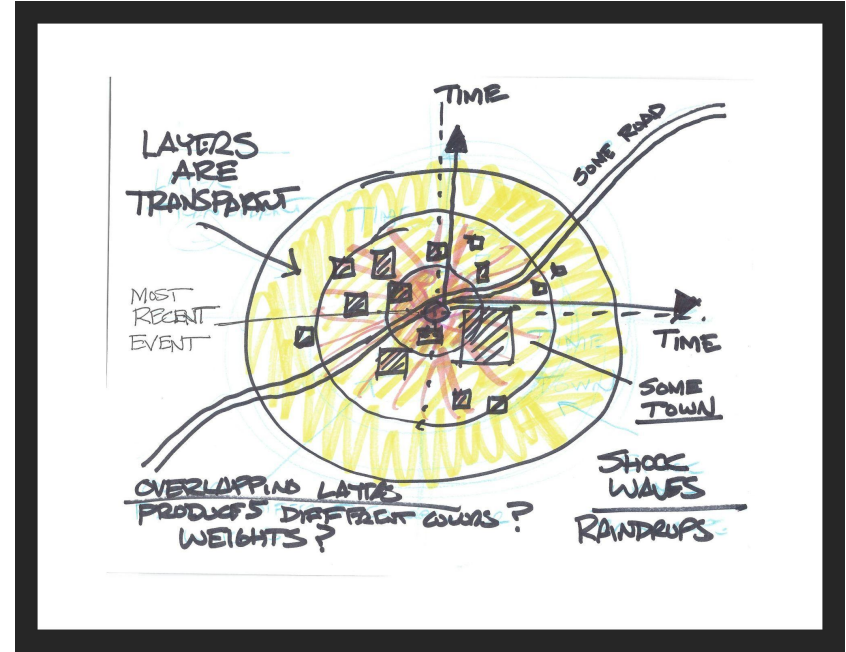
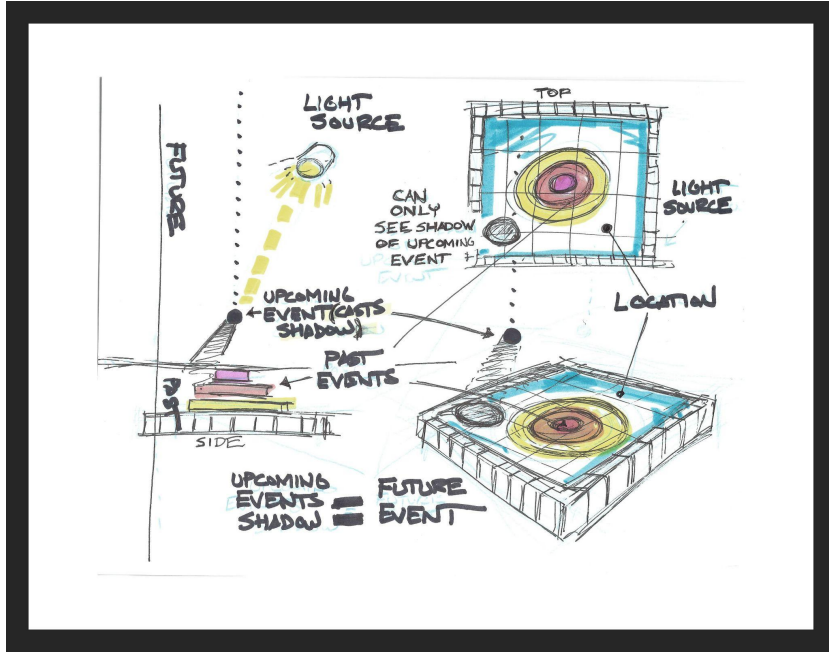
- Can you leverage traditional illustration, graphic design, and user experience techniques and apply them to the display of space-time metadata?
- How do you represent space-time events in two dimensions?

ideation imagine historical events as rain drops falling in a puddle of water.



ideation

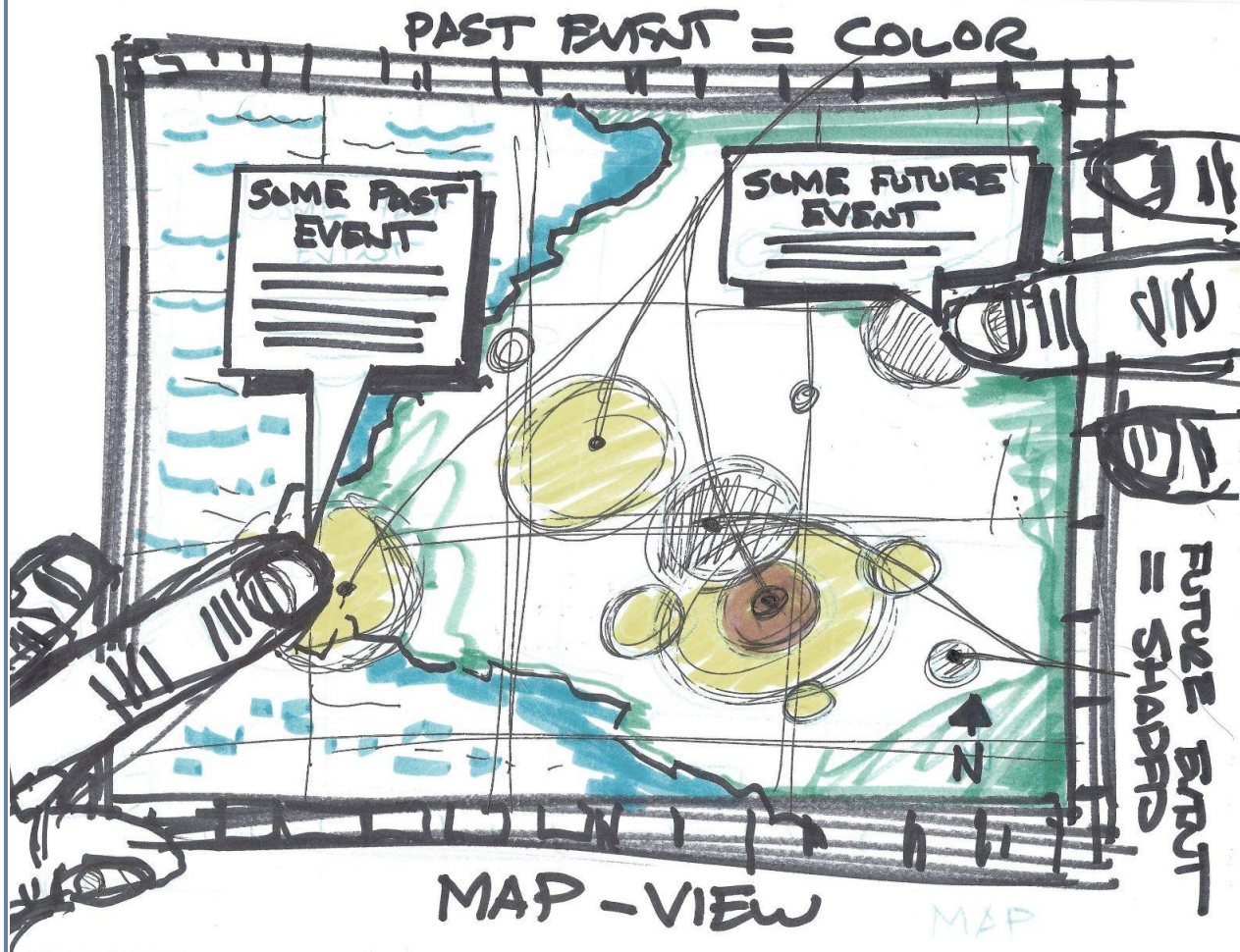
Age of the event is shown by the size and opacity of its circle.



ideation

Access event data by clicking or touching circles.

Older events will be on the bottom, with larger diameters.



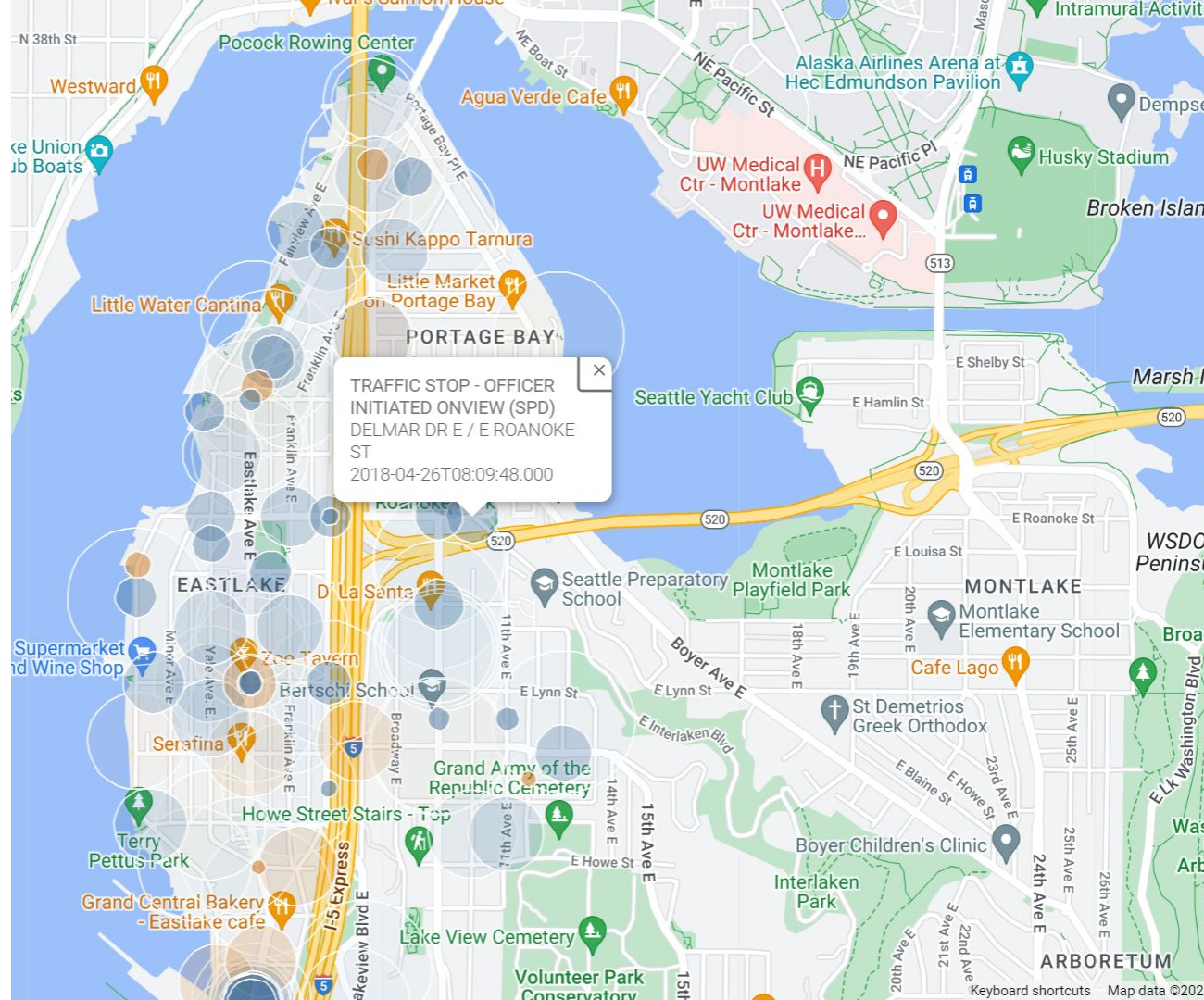
prototype

Visualizing Seattle 911 Data

Color reflects the type of event, blue for police events, orange for fire events.



Google Maps Platform



live web application | Uses static data collected in 2018

<https://www.2w2project.org/tools-applications/>